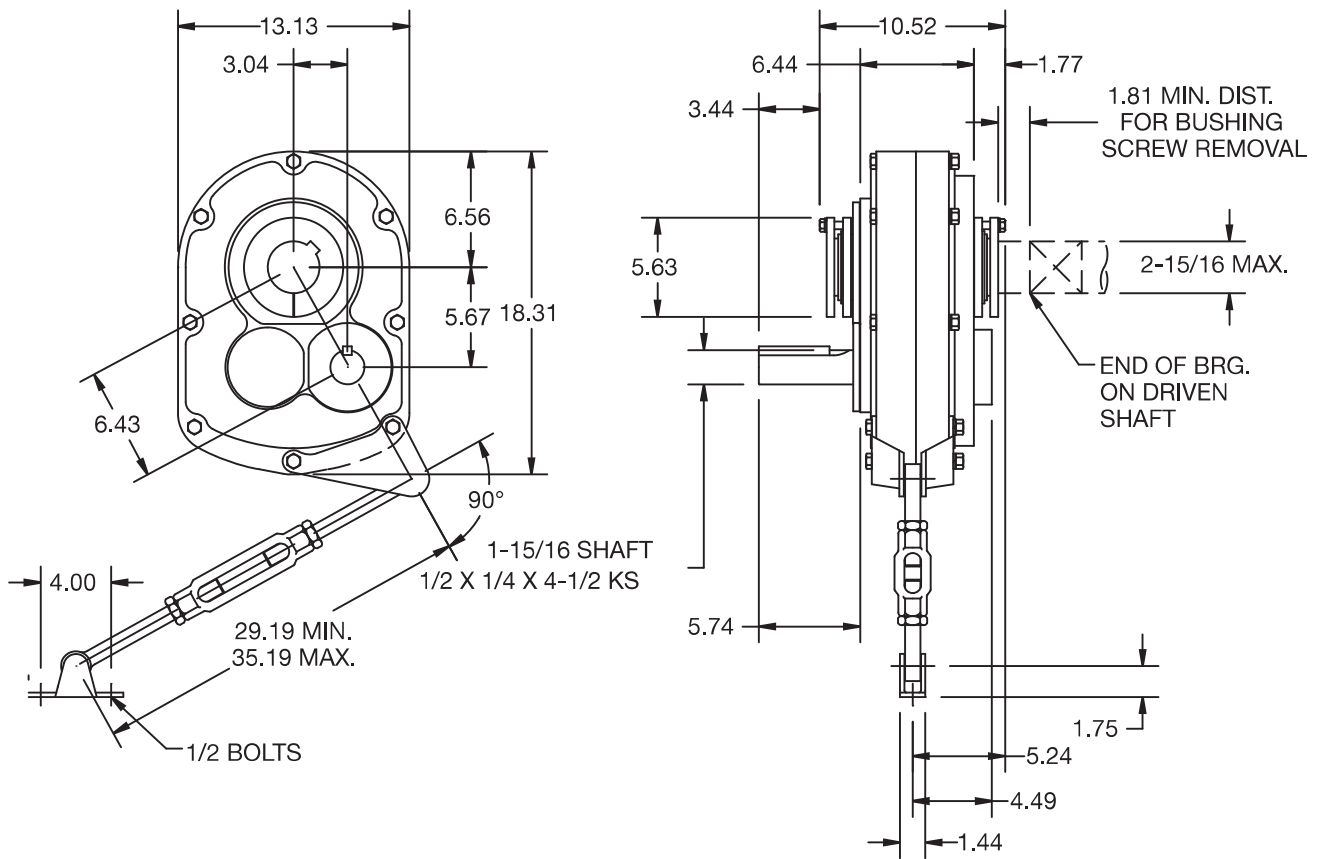




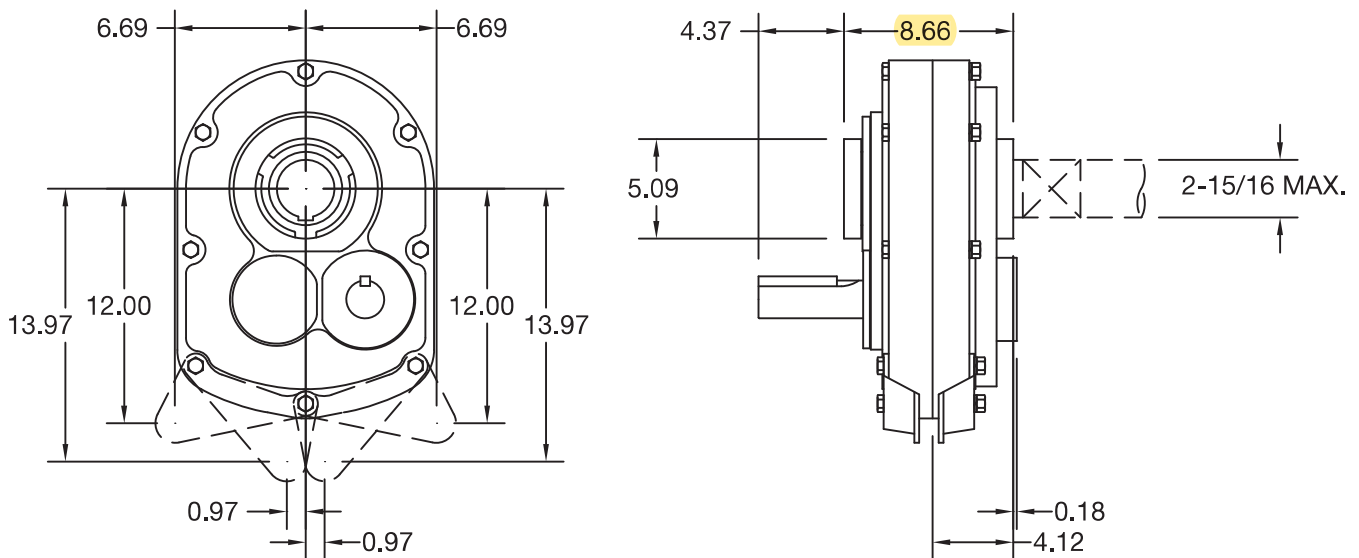
# SELECTION/DIMENSIONS

## Torque-Arm Shaft Mount Speed Reducers

### TXT5C - Double Reduction Taper Bushed



### TXT5C - Double Reduction Straight Bore



FEATURES/BENEFITS  
PAGE G3-2

SPECIFICATION  
PAGE G3-9

MODIFICATION/ACCESSORIES  
PAGE G3-72, G3-122

RELATED PRODUCTS  
PAGE G3-154

Gearing Reference Guide

MOTORIZED TORQUE-ARM II

TORQUE-ARM II

TORQUE-ARM

Engineering

System-1

Part Number Index



# SELECTION/DIMENSIONS

## Torque-Arm Shaft Mount Speed Reducers

### TXT5C Taper Bushed Reducers ■ ○

Reducer Size	Part Number	AGMA Code	Actual Ratio	Weight
TXT509CT	245550	215D09	8.95	207
TXT515CT	245551	215D15	15.40	207
TXT525CT	245552	215D25	25.56	207

### TXT5C Straight Bore Reducers ■ ○

Reducer Size	Part Number	AGMA Code	Actual Ratio	Weight
TXT509CS	245562 ♣	215D09	8.95	207
TXT515CS	245563	215D15	15.40	207
TXT525CS	245564	215D25	25.56	207

### Accessories for TXT5C Reducers

Description	Part Number	Weight
TA5M Standard Motor Mount (143T-286T)	245391	76
TA5M Special Motor Mount (324T-326T) ♠ ♣	245393	79
TA5ML Long Motor Mount (143T-286T)	245392	89
TAB5 Bottom Motor Mount (143T-326T) ♠	245405	55
TXT5B Backstop Assembly	245154	2.2
TXT5D TA Reducer Belt Guard (143T-286T)	245387	75
TXT5D TA Reducer Belt Guard for Long Motor Mount (143T-286T) ♣	245102	90
TXT5B Cooling Fan Assembly	272369	3
TXT5B Taconite Auxiliary Seal Kit ♥	245635	11.9
TXT5 Lube Kit	LUBEKITXT5	18.5

### TXT5 Bushing Assemblies ●

Stock Bore Size		Part Number		Shaft Keyseat Required †		Weight	
		Tapered Bushing	Straight Bore Bushing	Tapered Bushing	Straight Bore Bushing	Tapered Bushing	Straight Bore Bushing
2-15/16	(Max.)	245112	◆	3/4 x 3/8 x 9-3/8	3/4 x 3/8 x 4-3/8	7.8	—
2-11/16	—	245110	245428	5/8 x 5/16 x 9-3/8	5/8 x 5/16 x 4-3/8	7.9	3.0
2-1/2	▲	245099	245427	5/8 x 5/16 x 9-3/8	5/8 x 5/16 x 4-3/8	8.5	3.4
2-7/16	▲	245094	245426	5/8 x 5/16 x 9-3/8	5/8 x 5/16 x 4-3/8	8.5	4.3
2-1/4	▲	245092	245425	1/2 x 1/4 x 9-3/8	1/2 x 1/4 x 3	9.2	4.7
2-3/16	▲	245090	245424	1/2 x 1/4 x 9-3/8	1/2 x 1/4 x 3	10.0	5.6
2	▲	245088	245423	1/2 x 1/4 x 9-3/8	1/2 x 1/4 x 3	10.2	5.9
1-15/16	▲	245086	245422	1/2 x 1/4 x 9-3/8	1/2 x 1/4 x 3	10.3	6.1

♣ Made to order

† Shaft key furnished.

▲ Check the driven shaft and key for strength.

◆ Preferred bore. No bushing required for this bore size.

○ Stock TXT Reducers are drilled for vertical mounting.

♠ Dodge standard belt guards will not fit this motor mount.

■ See pages G3-174 and G3-175 for reducer part numbers and drill and tap dimensions for Flange Mount TXT Reducers. Now available only as special factory order.

● Taper Bushed Reducers require bushing for all bore sizes.

♥ Use with Taper Bushed Reducer only. See page G3-177 for drill and tap information required to mount to reducer.

FEATURES/BENEFITS PAGE G3-2	SPECIFICATION PAGE G3-9	MODIFICATION/ACCESSORIES PAGE G3-72, G3-122	RELATED PRODUCTS PAGE G3-154
--------------------------------	----------------------------	--	---------------------------------